

**DATOS TÉCNICOS/
TECHNICAL DATA**

Freq. 433.92MHz
6Vdc 2xCR2016 (3Vdc) / 10mA
Radiated power <10mW
Temp. -20°C _ +55°C

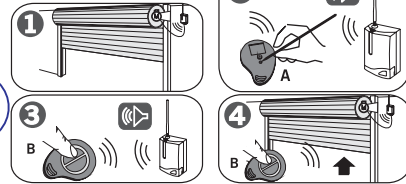
BATTERY REPLACEMENT



COD. 1221006 / 3.1



STANDARD PROGRAMMING



A=emisor dado de alta en una instalación / émetteur déjà mémorisé dans une installation / transmitter registered in an installation / Installation angemeldet
Sender / trasmettitore memorizzato in una installazione - **B**=nuevo emisor / nouvel émetteur / new transmitter / neuer Sender / nuovo trasmettitore