



User Manual

INTEGRA



Table of contents

Maintenance	3
Important safety instructions for installation	3
Important safety instructions for use	3
Equipment use	3
Description	4
Technical characteristics	4
Installation	5
Fitting the casing	5
Important considerations for start-up	5
Operating	6
*Anti-intrusion function	7
Option switch	7
Input switch	8
Buttons	8
Times	8
Light indicators	8
Input light indicators	9
Parameter configuration from programmer	9
Programming	9
Programming with ends of run and automatic close	9
Optional cards	10
Receiver card	10
Traffic light card	10
<i>This has three different functions (with switch* to OFF)</i>	10
<i>Traffic control (with switch* to ON)</i>	11
Signal card	11
RADIOBAND/RCS card	11
Magnetic detector card	11
Regulatory Data	12
EU Declaration of conformity	12

Maintenance

Important safety instructions for installation



Disconnect the power supply whenever you proceed to the installation or repair of the control panel.

- Before installing the panel, remove all unnecessary ropes or chains and disable any equipment such as locks that is not necessary for the automatic operation.
- Before installing the panel, check that the door is in good mechanical condition, correctly balanced and that it opens and closes correctly.
- Install the manual unlocking device at a height lower than 1.8m.
- Install any permanent control next to the door away from any moving part and at a minimum height of 1.5m.
- An easily accessible disconnection device must be fitted to the wiring for permanently connected equipment. This device must ensure the single-pole cut-off of power. It is wise for this to be an emergency switch/isolator.
- Where the panel is supplied without an emergency stop button, this must be incorporated on installation, connected to the STOP terminal.
- For correct use of the security edge, this must never be activated when the door is fully closed. It is wise to install the ends of run before activating the edge.
- This equipment can only be handled by a specialist fitter, by maintenance staff or by a suitably trained operator.
- To connect the power supply and motor wiring, 2.5 mm² section terminals must be used.
- Fuses must only be handled when the appliance is disconnected from the mains.
- The instructions for using this equipment must remain in the possession of the user.
- European door normative EN 12453 and EN 12445 specify the following minimum protection and door safety levels:
 - for single-family homes, prevent the door being able to come into contact with any object or limit the contact force (e.g. security edge) and, in the event of automatic closure, a presence detector (e.g. photocell) must be added.
 - for communal and public installations, prevent the door being able to come into contact with any object or limit the contact force (e.g. security edge) and detect presence (e.g. photocell).

Important safety instructions for use

- Do not allow children to play with the door controls.
- Keep the remote controls out of the reach of children.
- Watch the door movement and keep people away until the door is fully open or closed.
- Precaution when operating the manual unlocking device, as the door may suddenly fall due to the bad condition of the springs or door unbalance. Details on how to use the manual unlocking device must be provided by the manufacturer or the device installer.
- Examine the installation frequently, especially the cables, springs and supports, to detect signs of wear, damage or unbalance. Do not use the door if repair work or adjustments are required, as this may cause damage.

Equipment use

Designed for the automation of garage doors as per the general description. Not guaranteed for other uses.

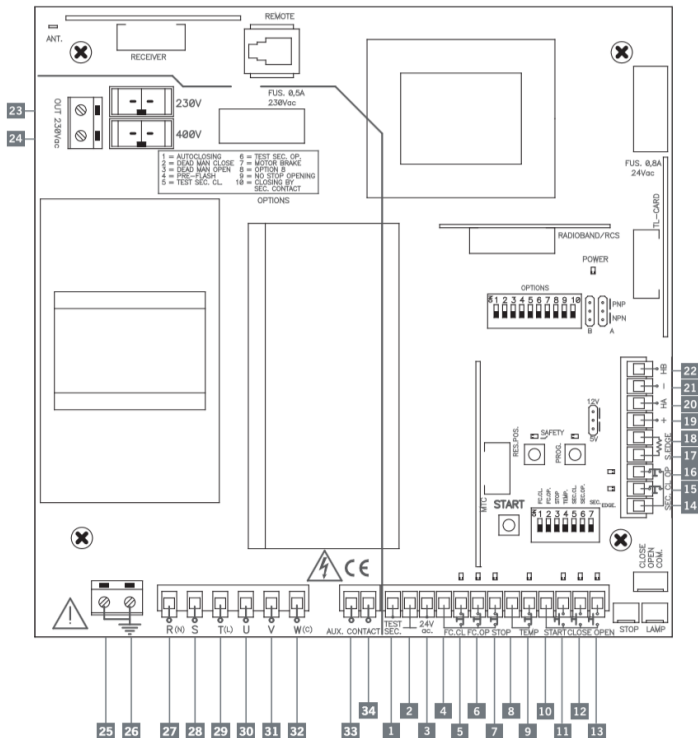
The manufacturer reserves the right to modify equipment specifications without prior notice.

Description

Control panel for the control of three-phase motors to 3CV at 400V and single-phase motors to 1.5CV at 230V for industrial doors. Allows for dead-man open and close operations, automatic dead-man close operations, semi-automatic operations and automatic operations. Connection to portable programmer.

Technical characteristics

	INTEGRA-ECO (standard box model)	INTEGRA (Industrial box model)
Panel supply	400V ac 3N / 230V ac	
Power	3CV / 1.5CV	
Optional cards	Receiver card, Radioband/RCS, signal, magnetic detector	
24Vac output	24V ac / 0.5A (shared with photocell test output)	
Photocell autotest output	24V ac / 0.5A (shared with security device output)	
Auxiliary contact outlet	Electro-brake / Electro-lock / Garage light	
230V ac outlet	Limited to (0.05A, 11W) powered at 400V Limited to (3A, 600W) powered at 230 Vac	
Operating temperature	-20°C to +85°C	
Sizes	225x195x85 mm	305x225x126 mm
Airtightness	IP54	IP56
Equipment category	Class II	

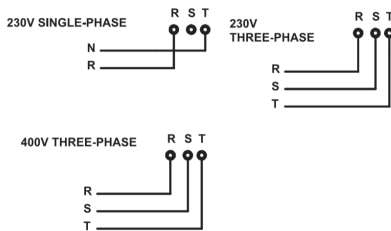


- | | | |
|---|--|---|
| 1 Test for security parts | 14 Common securities | 27 R(N) Power supply connection
230V/400V or neutral |
| 2 Common for security part test
and 24Vac outlet | 15 Security Close contact (NC) | 28 S Power supply connection
400V |
| 3 24Vac outlet | 16 Security Open contact (NC) | 29 T(L) Power supply connection
230V/400V |
| 4 Common ends of run and stop | 17 Security Close edge (resistive
contact 8k2) | 30 U triple phase motor con-
nection/ single phase |
| 5 End of run Close (NC) | 18 Security Close edge (resistive
contact 8k2) | 31 V triple phase motor con-
nection/ single phase |
| 6 End of run Open (NC) | 19 Sensor hall power (+) 12Vd-
c/+5Vdc depending on switch | 32 W(C) triple phase motor con-
nection/ common single phase |
| 7 Stop button (NC) | 20 "Sensor hall" HA signal inlet. | 33 Auxiliary contact outlet |
| 8 Common temperature contact | 21 "Sensor hall power" (-) 12Vd-
c/5Vdc depending on switch | 34 Auxiliary contact outlet |
| 9 Temperature contact (NC) | 22 "Sensor hall" HB signal inlet | |
| 10 Common buttons | 23 230V ac outlet | |
| 11 Alternative button (NO) | 24 230V ac outlet | |
| 12 Close button (NO) | 25 Earthing terminal | |
| 13 Start button (NO) | 26 Earthing terminal | |

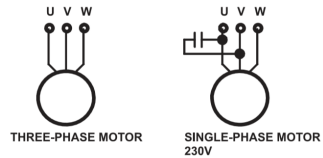


Warning: Where working with 230V connection, turn the switch to 230Vac, and where working with 400V three-phase connection, turn the switch to 400Vac.

LINE CONNECTION



MOTOR CONNECTION



Installation



Any handling of the panel for installation must be carried out with the power supply disconnected.

Fitting the casing

- Parts: front casing and container box.
- Unscrew the securing points. Insert the cables through the lower holes.

Important considerations for start-up

Check that the Open button opens and the Close button closes. Where this is not the case, invert motor cables U and V. Any optional cards must be connected to the panel with the power supply disconnected.

Operating

Open (OPEN)	Contact normally open to open. If pressed during the closing operation it stops and opens (until the end of the limit switch). Acts as “Dead-Man” if kept pressed down with Option 3 of the options switch triggered.
Close (CLOSE)	Contact normally open to close. If it is pressed while the door is opening, it stops. Acts as “Dead-Man” if kept pressed down with Option 2 of the options switch triggered.
Start (START)	Contact normally open to open and close. The first press opens, the second press stops (until the limit switch) and the third closes. If pressed during the closing operation it stops and inverts (until the end of the limit switch). The Start contact only acts as an open button when using a traffic light card with traffic control enabled.
Temperature (TEMP)	Contact normally closed for connection to a temperature sensor for the motor. When it indicates that the motor has exceeded the security limit, the operation will stop until it has cooled. Where not used, turn option 4 (TEMP) on the input switch to ON.
Stop (STOP)	Contact normally closed. This detains the operation on standby for a new order. Where not used, turn option 3 (STOP) on the input switch to ON.
Ends of run (FC.CL / FC.OP)	Contacts normally closed to mechanically indicate the open and closed end of run. Where not used, turn option 1 (FC.CL) and 2 (FC.OP) on the input switch to ON.
Security contact (SEC.CL / SEC.OP)	Contact normally closed, photocell or magnetic detector type. This acts by causing stoppage and partial inversion during opening and stoppage and total inversion during closure. Where not used, turn option 5 (SEC.CL) and 6 (SEC.OP) on the input switch to ON. The security close contact also acts as a close button when the vehicle has passed if Option 10 on the options switch is enabled.
Security edge (SEC.EDGE)	Resistive contact for resistive security edge. This acts on closing, causing stoppage and inversion. Where not used, turn option 7 (SEC.EDGE) on the input switch to ON.
24 Vac output	To power any equipment at a voltage of 24 Vac with a maximum consumption of 0,5A (shared with photocell test output).
Auto-test output (TEST. SEC)	24 Vac output for auto-test of security parts with a maximum consumption of 0,5A (shared with 24Vac output).
Auxiliary Contact (Aux. Contact)	Normally open contact that has three different functions depending on the position of Option switches 7 and 8.

Auxiliary Contact Function	Option switch 7	Option switch 8
Electro-brake: Enables electro-brake to unblock motor during operations.	ON	OFF
Anti-intrusion function *	ON	ON
Electro-lock: Enables electro-lock 3 seconds before the start of the opening operation.	OFF	OFF
Garage light: Enables garage light during the door operating time plus 2 minutes.	OFF	ON

*Anti-intrusion function

Activates the auxiliary contact on the following cases:

- If during the opening or closing movements, or with the door opened, it detects the passage of more than one vehicle by the close safety contact (SEC.CL). If this occurs during the opening movement, the door will finish opening. If this occurs during the closing, the door will invest up until being completely open. The door remains opened, without making auto-closing even if it is activated.
- If the control panel has not given the order to open and closing end of course (FC.CL) is deactivated. For example, if someone tries to open the door by force.

Deactivation of the alarm (auxiliary contact)

- The alarm will be disabled in any case using the buttons START, OPEN or CLOSE, or by a transmitter programmed. The STOP button stops the alarm when the door is wide open.

Operation counter An operation counter and operation limit number is fitted. On reaching the limit number of operations, the panel switches to dead man operations and the POWER light flashes (only INTEGRA model)

Option switch

Option No.	Lower position – OFF (default option)	Upper position – ON
1	Does not close automatically	Automatic closure
2	Operating normally close	“Dead man” close*
3	Operating normally open	“Dead man” open*
4	Operating without Pre-signal	Pre-signal before handling
5	Operating without C. security close test	C. security close test
6	Operating with C. security open test	C. security open test
7	See table Auxiliary Contact Function	
8	See table Auxiliary Contact Function	
9	Allows for radio reverse on opening	Does not allow for radio reverse on opening
10	The security close contact works are normal	The security close contact also acts as the close button when the vehicle has passed



* The “dead man” close and open moves the door while the button is pressed down.

Input switch

Nº Opción	Lower position - OFF	Upper position – ON (default option)
1 (FC.CL)	End of run close connected	End of run close not connected
2 (FC.OP)	End of run open connected	End of run open not connected
3 (STOP)	Stop button connected	Stop button not connected
4 (TEMP)	Temperature contact connected	Temperature contact non connected
5 (SEC.CL)	Security Close contact connected	Security Close contact not connected
6 (SEC.OP)	Security Open contact connected	Security Open contact not connected
7 (SEC.EDGE)	Security Close edge connected	Security Close edge not connected

Buttons

START Start/stop button

PROG Programming button

RES POS Position reset button. *



* This button performs the position reset when the panel operates using sensor hall. To do so, the door must be totally closed and the button kept pressed down until the programming led flashes.

Times

Controlling	Minimum	Maximum
Motor operating	1s	180s
Wait for automatic close	1s	180s

Light indicators

POWER Indicates power

PROG Indicates programming

Number of flashes	Error	Code
1 flash	Security edge autotest error	1
2 flashes	Security close contact autotest	2
3 flashes	Security close contact autotest	3
4 flashes	Security edge error	4
5 flashes	RADIOBAND/RCS card autotest error	5
6 flashes	Sensor Hall error	6

LAMP (in INTEGRA model) Blinks indicating security activated

Input light indicators

Function	Indicates	Default status
OPEN	Open function	Normally off
CLOSE	Close function	Normally off
START	Open/close function	Normally off
TEMP	Temperature sensor	Normally on
STOP	Stop button	Normally on
FC.OP	End of run Open	Normally on
FC.CL	End of run Close	Normally on
SEC.OP	Security Open contact	Normally on
SEC.CL	Security Close contact	Normally on

Parameter configuration from programmer

There are different parameters that can be configured by portable programmer. Below is a description of the most basic. Refer to the programmer instruction manual for further information.

- Operation by Time: Indicates / selects if the panel is programmed to operate by time.
- Operation by Pulses: Indicates / selects if the panel is programmed to operate by pulses.
- Oper. counter limit: Indicates / selects the limit number of operations for the panel.
- Operation counter: Indicates the number of operations made to date.
- Oper.Count.Limit Active: Indicates / selects if there is a limited number of operations or not.
- Autoclosing time: Indicates / selects the seconds of automatic standby time.
- Equip.: Shows an equipment identifier.

Programming

- During programming, the control panel does not take all possible securities into account.
- Before starting any type of time programming, it is wise to have the corresponding options correctly selected and ensure the cards to be used are inserted.
- Where RADIOBAND/RCS cards are used, the panel must be programmed with the card inserted.
- Operations can be programmed indifferently using the “Test” / “Start” button or through a transmitter recorded on a pluggable radio card for control panels.
- Where a sensor hall is used, its pulse type is memorised in the panel during programming.

Programming with ends of run and automatic close

Close the door with the limit switches (where applicable) duly connected.

Press the TIMER PROG button to enter programming. The red PROG led with light up. The first time TEST is pressed, the door opens to the end of run open and the automatic standby timer begins. The second time TEST is pressed, the automatic standby timer stops and the door closes to the end of run close.

Press the TIMER PROG button again to exit programming (the red PROG led will switch off).

Optional cards

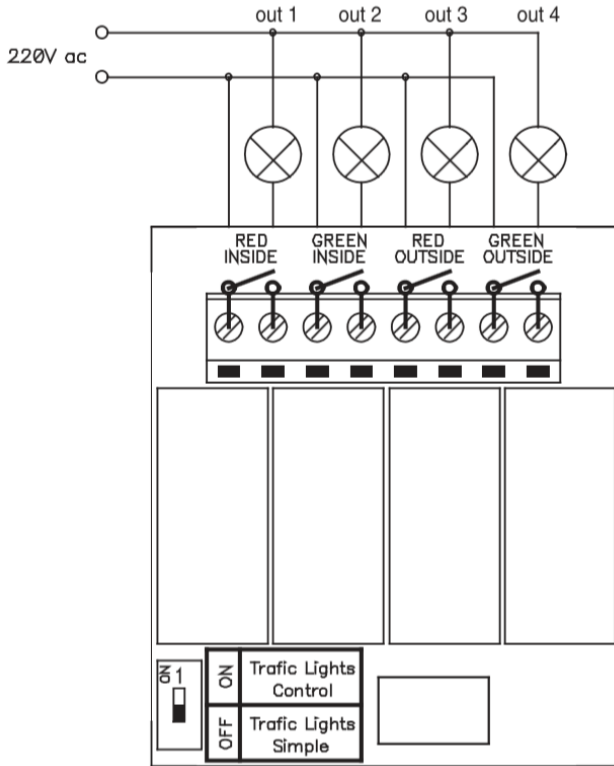
Receiver card

This acts on the panel with transmitters, proximity keys or smart cards in the same way as the start button.

If working with a receiver card for dead-man (only available in 868MHz) and options 2 and 3 of the options switch are ON, channel 1 opens and channel 2 closes.

In any other case, channel 2 is not operative.

Traffic light card



This has three different functions (with switch* to OFF)

Output 1

Signal.

Output 2

Light contact – acts for the entire time that the door is operating, plus 10 seconds

Output 3 and 4

Traffic lights. Outlet 3 activates the red traffic light that works during door movement. Outlet 4 activates the green traffic light that is only lit when the door is fully open

Traffic control (with switch* to ON)

When this option is activated, the traffic light interprets the Alternative contact as an outdoor open button and the Open contact as the indoor open button.


While the door remains closed, no signals are given. When the open order is received, the indoor and outdoor red light contact gives a warning flash for 3 seconds before carrying out the operation.

As the door is opening, the two red lights will switch on (indoor and outdoor).

Once the door is open, the corresponding lights will come on, depending on the activation point:

Pushbutton	Activation	Red signal	Green signal
OPEN	Interior open button	Exterior lamp	Interior lamp
START	Exterior open button	Interior lamp	Exterior lamp

Before beginning the close manoeuvre, the interior or exterior green light contact (depending on the case) will give an intermittent pre-warning of 3 seconds. While the door is closing, the two red lamps will light (interior/exterior).

 * Warning: this switch must be enabled and disabled using when the power supply to the panel is disconnected.

Signal card

Through the contact of a relay intermittently activated, this gives a warning 3 seconds before the opening and closing movements are started and while they are underway.

RADIOBAND/RCS card

Optional radio-communications card for security edges.

Magnetic detector card

This allows for the same function as an outside magnetic detector although without the need for an external power supply. It can be used as an open button and/or security contact. It also includes the frequency changer selection and delay application for presence deactivation.

Regulatory Data

EU Declaration of conformity

The manufacturer **JCM TECHNOLOGIES, S.A.** declares that the product **INTEGRA** cumple con los requisitos esenciales de la Directiva RED 2014/53/UE y de la Directiva RoHS 2011/65/UE.

See website www.jcm-tech.com/declarations/

JCM TECHNOLOGIES, SA
C/COSTA D'EN PARATGE, 6B
08500 VIC (BARCELONA)
SPAIN

