



**User Manual**

**PAD**



# Table of contents

<b>Important safety instructions</b> .....	<b>3</b>
Use of the equipment .....	3
<b>Description</b> .....	<b>3</b>
<b>Technical characteristics</b> .....	<b>3</b>
<b>Assembly</b> .....	<b>4</b>
<b>Wiring</b> .....	<b>4</b>
<b>Connection to the HDOOREVO</b> .....	<b>5</b>
<b>Configuration</b> .....	<b>6</b>
Wiegand34 selection .....	6
Change PIN length .....	6
Change master code .....	6
Restart the factory master code .....	6
Options Menu .....	7
<b>Regulatory Data</b> .....	<b>8</b>
UKCA Declaration of conformity .....	8
EU Declaration of conformity .....	8

## Important safety instructions



- Do not install the device in a place exposed to sunlight without a protective visor.
- Do not install the device or its wiring near a source of strong electromagnetic fields, such as a radio transmission antenna.
- Do not place the device either near, or on top of heating equipment.
- When cleaning, do not use water or other liquid cleaning products, wipe with a soft cloth or towel. Do not allow children to touch the device without proper supervision.

## Use of the equipment

This equipment is designed for applications with an automated garage door. It is not guaranteed for the direct activation of other devices other than those specified.

The manufacturer reserves the right to change the specifications of the equipment without prior notice.

## Description

PAD is a multiprotocol Wiegand/clock and amp, Data/Codix keyboard, with a configurable PIN length.

The integrity breach (tamper) switch will activate the alarm system if you try to open or remove the unit from the wall.

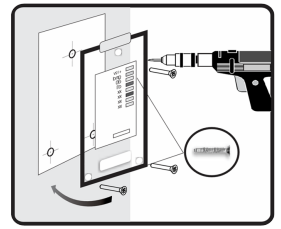
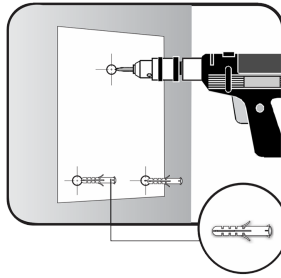
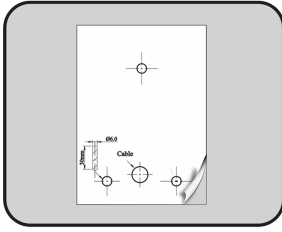


By default, PAD is set with the Wiegand 26 protocol with a 4-digit PIN.

## Technical characteristics

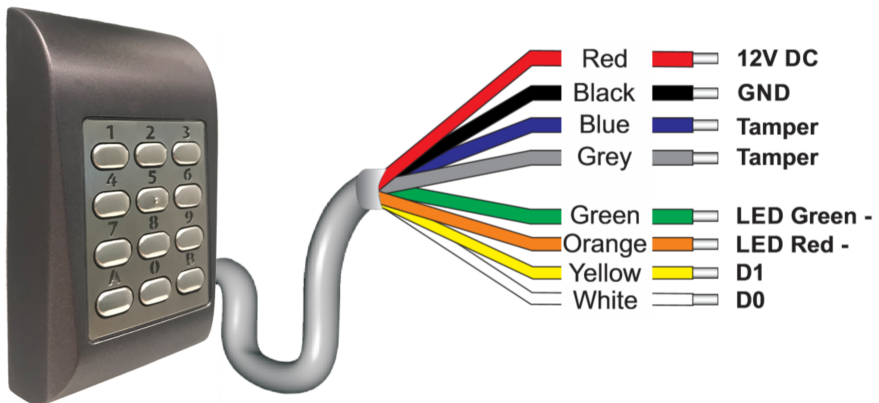
Interface	Wiegand de 26, 30, 34, 37, 40, 42 ó 58 bits, Clock-&Data or Codix
Protocol programming	By keypad
Maximum cable length	50m
Connection	Cable, 0.45m
Green and red LED	Externally controlled
Orange LED	Key and menu touch
Bell ON/OFF	Yes
Backlight ON/OFF	Yes
Manual control	Yes
Consumption	60mA
Watertightness	IP65
Power supply	9-14VDC
Operating temperature	-20°C to +50°C
Dimensions (mm)	92 x 51 x 25
Housing	Moulded aluminium

## Assembly



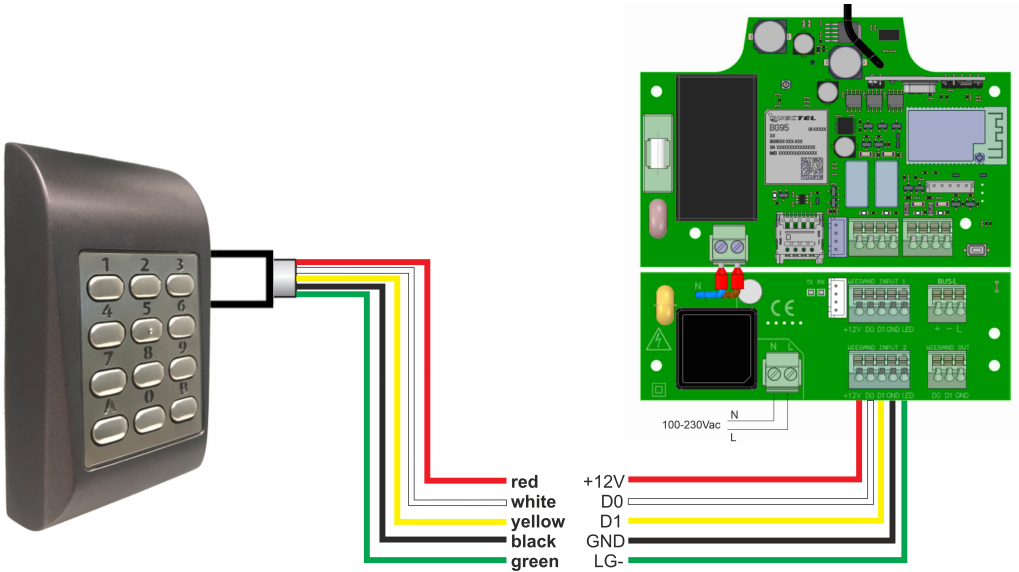
- 1- Identify a suitable location on a wall or flat surface.
- 2- Stick on the mounting template and drill the holes according to the diagram.
- 3- Insert the three 5mm screw plugs into the holes.
- 4- Pass the cables through the back plate.
- 5- Fasten the back plate firmly to the wall with the three 30mm screws.
- 6- Connect the cables and place the housing onto the back plate, guiding it from the top down.
- 7- Secure the housing to the back plate with the three 6mm safety screws using the screwdriver provided.

## Wiring



12V DC	9-14V CC
GND	Ground
Tamper	Tamper Switch
Tamper	Tamper Switch
LED Green -	Green LED
LED Red -	Red LED
D1	Data 1
D0	Data 0

## Connection to the HDOOREVO





By default, PAD is set with the Wiegand 26 protocol with a 4-digit PIN.

Default master code: 000000

## Wiegand34 selection

- Hold the "B" key down until you hear 3 beeps.
- Master code (by default: 000000) → Orange LED activated.
- Press 6.
- Press 2.
- Press A → Orange LED deactivated.

## Change PIN length

### Example 8-digit PIN:

- Hold the "B" key down until you hear 3 beeps.
- Master code (by default: 000000) → Orange LED activated.
- Press 4.
- Press 8.
- Press A → Orange LED deactivated.

### Notes:

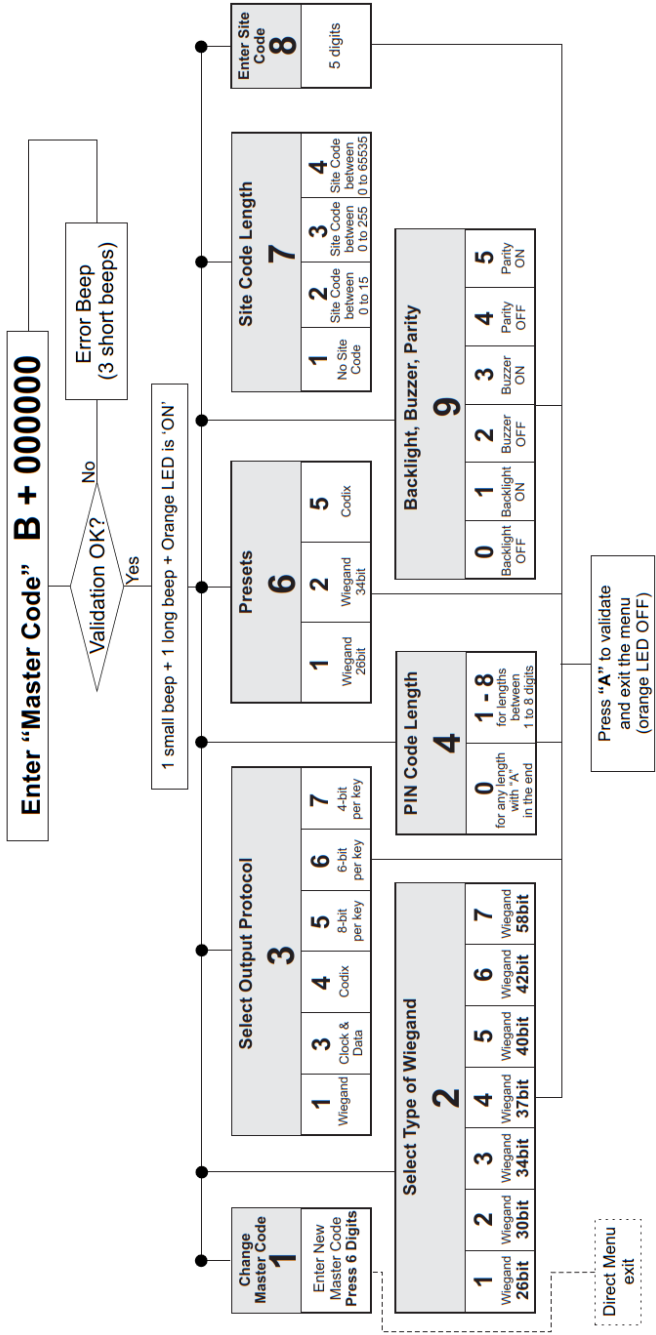
- Option 4-6: 6-digit PIN (recommended for WG26).
- Option 4-9: 9-digit PIN (recommended for WG34).
- Option 4-0: PIN for any length (not recommended).
  - If you want to work without a limitation on duration, consider these restrictions (Warning: with these modes, higher values will cause double codes):
    - WG26 → maximum value = 16,777,215
    - WG34 → maximum value = 4.294,967,295
  - Caution: values higher than the maximum value will lead to repeated codes when the device decodes the PIN.
  - In this mode, you must press "A" to send the PIN you have entered.

## Change master code

- Hold the "B" key down until you hear 3 beeps.
- Master code (by default: 000000) → Orange LED activated.
- Specify the new master code (6 digits).
- Press A → Orange LED deactivated.

## Restart the factory master code

- Disconnect from power source.
- Hold the "A" key down and reconnect to power source.
- Hold the "A" key down for at least 2 seconds.
- You will hear 3 beeps.



## Regulatory Data

### UKCA Declaration of conformity

**JCM TECHNOLOGIES, SAU** hereby declares that the product **PAD** complies with the relevant fundamental requirements of the Electromagnetic Compatibility Regulations 2016 whenever its usage is foreseen; and with the RoHS Regulations 2012.

### EU Declaration of conformity

**JCM TECHNOLOGIES, SAU** hereby declares that the product **PAD** complies with the relevant fundamental requirements of the Directives 2014/30/EU on electromagnetic compatibility whenever its usage is foreseen; and with the 2011/65/EU RoHS Directive.

See website <https://www.jcm-tech.com/declarations/>

JCM TECHNOLOGIES, SAU  
C/ COSTA D'EN PARATGE, 6B  
08500 VIC (BARCELONA)  
SPAIN

