

# presentation dossier



**MOTION** access control line  
advanced remote controls system 868 MHz

CONFIDENTIAL



# introduction



Following the successful launch of its innovative range of basic, 868 MHz remote controls, **JCM TECHNOLOGIES, SA** has developed:

A new 868 MHz advanced remote control system  
**MOTION access control line**

to provide its customers with user-friendly products with excellent management and control possibilities that will enable them to explore new business opportunities on the current advanced automation market and on new markets such as access control.



# contents

- ① system positioning - 03
- ② applications - 04
- ③ system strong points - 05
- ④ sales pitch - 06
- ⑤ MOTION access control line transmitters - 12
- ⑥ MOTION access control line receivers - 15
- ⑦ Autonomously managed MOTION control units - 20
- ⑧ Centrally managed MOTION control units + management software - 24
- ⑨ MOTION access control line proximity equipment - 27
- ⑩ MOTION access control line programming tools - 34



# MOTION access control line system positioning

**MOTION** is an 868.35 MHz remote control system designed to meet advanced managed facilities.

## customer profile

- Advanced installations
- Access control management
- Maintenance contracts

## needs

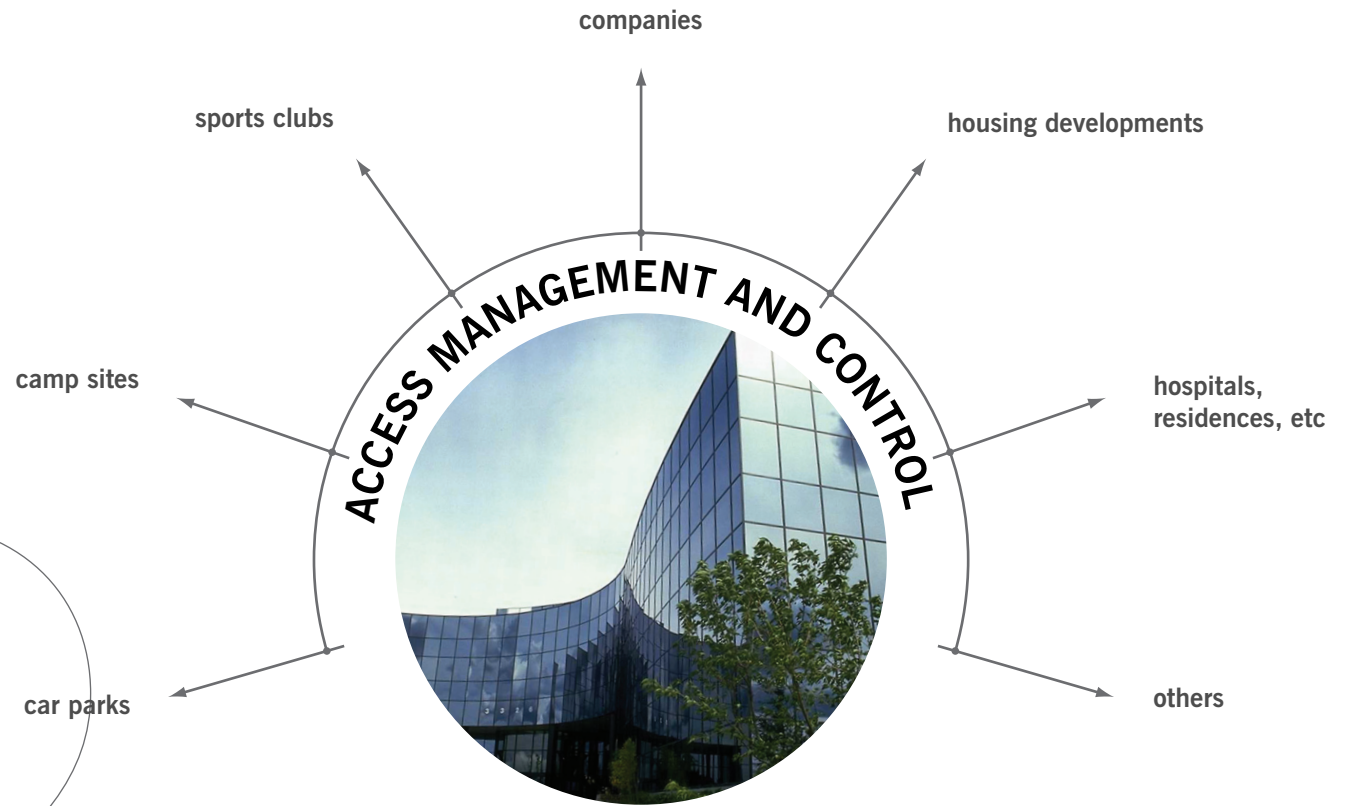
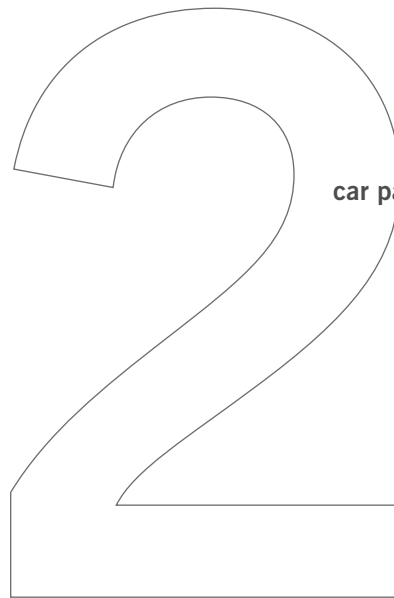
- Safe, reliable and invulnerable products
- "Area" protection
- Solving of special applications
- Management of access control installations
- List of customer "loyalty"



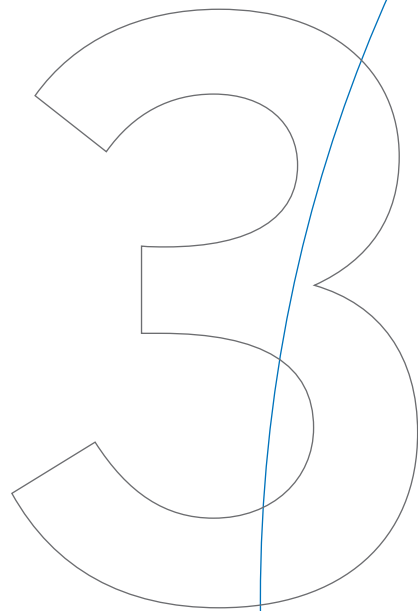
# applications



04



# the strong points of the **MOTION** access control line system



- ➔ greater **simplicity** in installation management
- ➔ greater **flexibility and speed** in programming equipment
- ➔ permanent **range** of remote controls
- ➔ new business **opportunities**
- ➔ guaranteed subsequent **sales** of installations
- ➔ state-of-the-art technology
- ➔ **design** with fitters in mind
- ➔ increased **security**
- ➔ **compatibility** with the DCS range



# sales pitch

## 04.01 MOTION provides a simpler form of managing installations

- **management of serialized transmitters\* without altering the original code**

With the MOTION system, fitters do not have to keep a record of the transmitter series numbers, as the system will do this for them.

Improvements in comparison with other systems lie in the fact that the original transmitter code never changes and it is always the same as the number laser-engraved on the rear. This means that, even if the fitter creates a different reserve code in the management programme or on the receiver card, the transmitter will always send its original code to the receiver.

\* transmitters can optionally be sent with correlative numbers from the factory.

- **most intuitive programming tools**

The SOFT-ASSISTANT management programme in the Windows environment provides more flexible management of installations. It is easy to use and requires a very little training. It allows for the personalised configuration of the operating options.

## 04.02 MOTION provides more flexibility and speed on programming equipment

- **radio and proximity equipment programming without mechanical contact**

Radio and dual technology transmitters, proximity keys and cards are programmed by simply holding them close to the programming equipment without the need for the typical mechanical connector used with other systems.

- **dual technology equipment can be programmed at the same time**

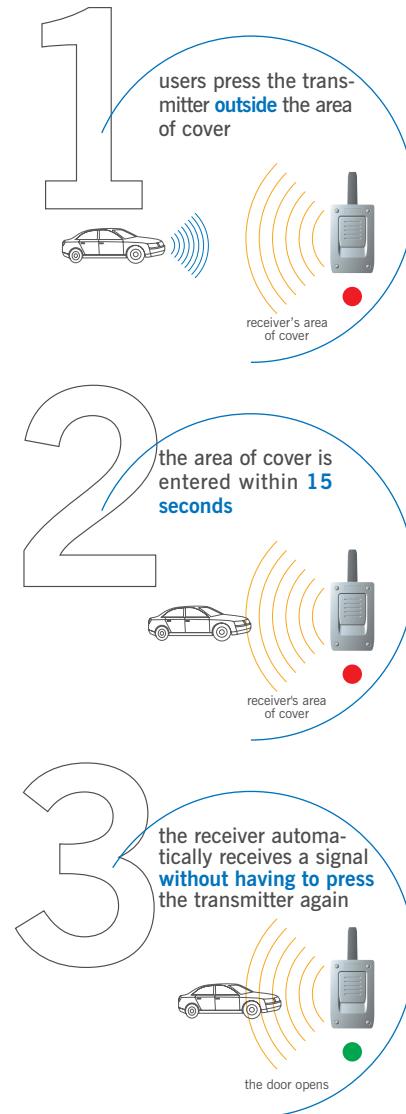
In dual technology transmitters, the radio and proximity part share the same code and can be programmed at the same time by merely holding the transmitter close to the programmer.

- **control units with on-board programming**

All of the autonomous control units in the MOTION access control range can register/cancel codes and other operations directly from the keypad included in the box.

# sales pitch

## \*APS system



- automatic replacement of transmitters/cards with no limit on the number of replacements**  
 This function automatically replaces transmitters with no limit to the number of replacements. This is done by simply pressing the new transmitter once in front of the installation. This process can be repeated as many times as required and a stolen or lost transmitter can be replaced as many times as necessary. The system also preserves the original code laser-engraved on the rear of the transmitter.

### 04.03 MOTION radiofrequency equipment has a permanent range

- innovative APS (APproaching System) transmission system\***  
 The APS system has been implemented into MOTION remote controls to make sure that the door is open when the user arrives home. In fact, after the transmitter is pressed for the first time, it sends the signal repeatedly as the user approaches the door, with the subsequent feeling of greater range for users.
- use of a new European frequency (868.35 MHz) that is clearer than the 433.92 MHz band**  
 The MOTION remote controls operate on the new permitted frequency of 868.35 MHz. This band, has several advantages over 433.92 MHz remote controls.
  - It is much clearer as it has a duty cycle limited to 1% with which no equipment can theoretically transmit 100% of the time (such as inhibitors).
  - This being a frequency that is exclusively for use by remote controls, transmitters are not disturbed by other audio (wireless headphones) or transceiver (walkie-talkie) equipment that can be used on the frequency of 433.92 MHz.





# sales pitch

08

Although 433.92 MHz was the most recently permitted band for this use, it has been characterised by significant interference generated by the "frequency inhibitors" and by "crane transmitters", both with great transmitter power which caused big problems in the operating of garage installations.

#### 04.04 MOTION will open the door to new business opportunities

- **possibility of covering new markets**

MOTION offers a full range of products for work on the advanced automation market while offering the opportunity to enter the access control market for small, medium and large groups of up to 40,000 users. JCM provides the possibility of extending your business without complications, using innovative products and technologies of proven reliability (e.g. pre-payment applications).

- **products with multi-technology**

The dual technology transmitter is a unique, very attractive part for both the automation and the access control market that combines 868 MHz radio technology with 13.56 MHz proximity technology.

#### 04.05 MOTION assures subsequent sales of your installation

- **distributor code**

The MOTION range allows for an exclusive, factory-recorded distributor code to be allocated.

- **exclusive fitter code**

MOTION installations can be personalised with the incorporation of an exclusive fitter code. Where fitters request as such from their distributor-supplier, a personal code can be allocated, which can be added to transmitters using the ASSISTANT programming tool.



# sales pitch

Once the first transmitter has been recorded with the fitter code on a receiver, the receiver will only accept transmitters personalised with this exclusive code. This system avoids the infiltration of other fitters in completed jobs.

- **expansion of the number of fitters**

To ensure that all fitters requiring as such can have their own, exclusive code, the number of fitter codes has been increased in the MOTION range to a total of 128 for each distributor.

#### 04.06 MOTION equipment designed with user-friendly, state-of-the-art technology

- **internet programme updating**

By entering a restricted area on the JCM website, authorised customers can directly download the ASSISTANT installation management updating programme (hardware + software).

- **internet installation enquiries and programming**

The enquiry and programming functions can be carried out as follows:

- Enquiries and programming directly from the PC with the help of the ASSISTANT tabletop programmer.
- Where the company has intranet and the installations are stored in the server, the installations can be managed “on site” using a laptop and subsequent data synchronisation in the company.



# sales pitch

## 04.07 designed with fitters in mind

- **closing system on receivers and small control units for a high level of waterproofing**

The receivers are supplied in well-designed boxes with a screw-down, front closing system and a new rubber leading-in insulators for different types of cables and conductors that guarantee IP54 (or IP65 with gland boxes and gaskets). Furthermore, the screws are “stud” types to stop them from coming out of their housing during fitting.

- **opening systems on control units for greater convenience**

The ACCESS 1000/2000 and CONTROLLER 6000 access control units have a hinged lid and side opening to prevent the lid from falling off when handling or programming the control unit.

- **very easy wall attachment**

The box is attached to the wall using four screws and the bottom of the equipment has been designed to overcome unevenness on the wall.

- **fast wiring**

All of the receiver and access control units have a suitable space for easy cable terminal connections.

## 04.08 increased security on all the MOTION range

- **more encrypting bits**

The new MOTION equipment has 64 bits instead of the 32 used on other product lines: twice the number of encrypted bits with the subsequent increase in security. The number of combinations has also considerably increased to 19 trillion ( $19 \times 10^{24}$ ) different codes.



# sales pitch

- **a unique encrypting key for EACH transmitter**

To ensure the utmost security of its equipment, **JCM TECHNOLOGIES, SA** has developed a system whereby each transmitter has its own encrypting key. Thus, despite others being aware of the key of one of the GO-PRO or GO-EVO transmitters, it is impossible to generate the encrypting key of any other remote control.

- **high-security rolling code system**

MOTION uses a high-security rolling code system.

This system means that every time the button on a GO-PRO or GO-EVO transmitter is pressed, a DIFFERENT, UNIQUE code is sent to the receiver.

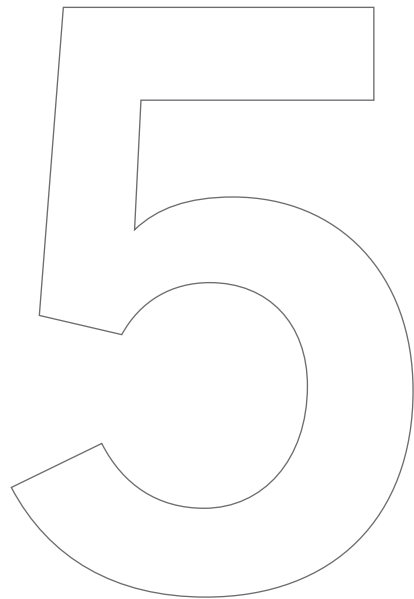
## 04.09 MOTION offers compatibility with the DCS range

- **interface equipment**

The ACTIVA-MOTION interface receiver can be used with the 868 MHz GO-PRO and GO-EVO transmitters on all existing installations and those equipped with the previous generation Dynamic Code System DCS receivers. Should you want to replace a DCS receiver for a MOTION receiver, the use of DCS and MOTION transmitters can be combined on the same installation to avoid the inconvenience of users having to change transmitter.

# MOTION access control line transmitters

## models available



**GO-PRO2** programmable transmitter  
868.35 MHz  
2 channels  
high-security rolling code  
APS system

**GO-PRO4** programmable transmitter  
868.35 MHz 4 channels  
high-security rolling code  
APS system



**GO-EV02** programmable key-transmitter with dual technology  
(868 MHz radio + 13.56 MHz proximity)  
2 channels  
high-security rolling code  
APS system

**GO-EV04** programmable key-transmitter with dual technology  
(868 MHz radio + 13.56 MHz proximity)  
4 channels  
high-security rolling code  
APS system

## MOTION access control line transmitters

### transmitter operations

- New European frequency at **868.35 MHz**: more range and less atmosphere interference.
- Including new **APS** System to provide more user convenience, the feeling of permanent range and greater reliability.
- Two programmable radio models: **two-channel** (2 buttons) and **four-channel** (4 buttons).
- Two programmable models with **dual technology** (radio + proximity): two-channel (2 buttons) and four-channel (4 buttons). The proximity function works on any channel.
- High-security rolling code system with a **new encrypting system** and increased security.
- **19 trillion** ( $19 \times 10^{24}$ ) different codes.
- **Contactless** code programming, without having to remove the transmitter from its packaging.
- **Simultaneous recording** of radio and proximity code in a single operation.
- **Fitter code**: the installations can be personalised by incorporating an exclusive code (up to 128 codes). Should the fitter request as much from his distributor, a personal code can be allocated that can be added to the transmitters and other equipment using the **SOFT-TRAINER**. Recording is contactless.
- **Battery saving**. LED transmission and operating times are limited. Despite being pressed for longer, it will automatically disconnect after 10 seconds.



## MOTION access control line transmitters

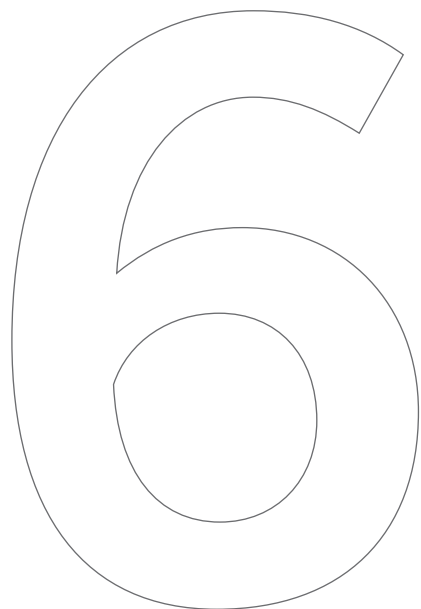
### other transmitter characteristics

- Series number **laser-engraved** on the back of the transmitter.
- **Metallic paint** finish to reinforce the product's quality image.
- Very original, **attractive key ring**.
- **Transmitter can be personalised** with the distributor's logo (on the front).
- **Fitter information:** on the rear of the transmitter. The fitter is given a space for a personalised label that can include the most relevant details of his company.
- Good **"click" effect** buttons that are easily told apart.
- Optimum **pocket size**.
- **Instructions** with cryptograms for battery changes and fitting the key ring.

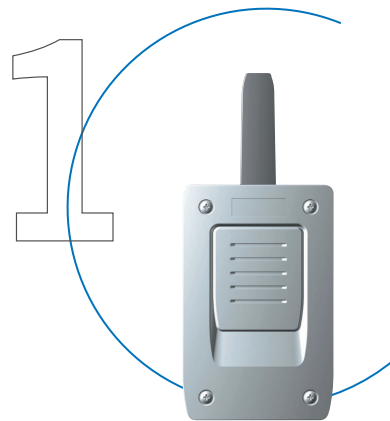
# MOTION access control line receivers



15



## models available receivers in mini box



**BASE500-1B** 868 MHz  
500 codes  
1 channel  
12/24 V .ac.dc.

**BASE500-2B** 868 MHz  
500 codes  
2 channels  
12/24 V .ac.dc.

**BASE500-1** 868 MHz  
500 codes  
1 channel  
230 V .ac.

**BASE500-2** 868 MHz  
500 codes  
2 channels  
230 V .ac.

**CONNECT** Wiegand and Clock&Data multi-protocol receiver

**ACTIVA MOTION** active antenna for the MOTION range / interface receiver DCS-MOTION

## receivers in standard box



**WAVE500-1B** 868 MHz  
500 codes  
1 channel  
12/24 V .ac.  
with inlet for access control

**WAVE500-2B** 868 MHz  
500 codes  
2 channels extendable to 4  
12/24 V .ac.dc.  
with inlet for access control

**WAVE500-1** 868 MHz  
500 codes  
1 channel  
230 V .ac.  
with inlet for access control

**WAVE500-2** 868 MHz  
500 codes  
2 channels extendable to 4  
230 V .ac.dc.  
with inlet for access control

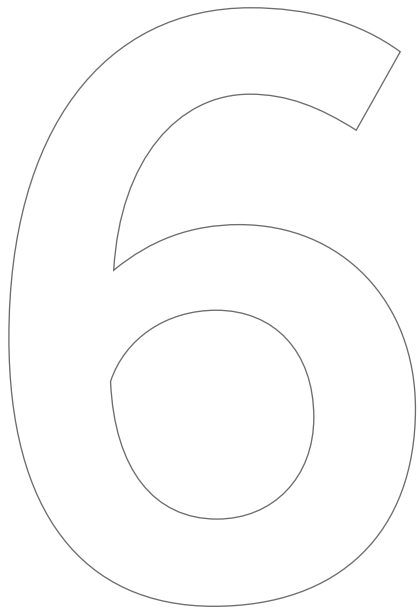




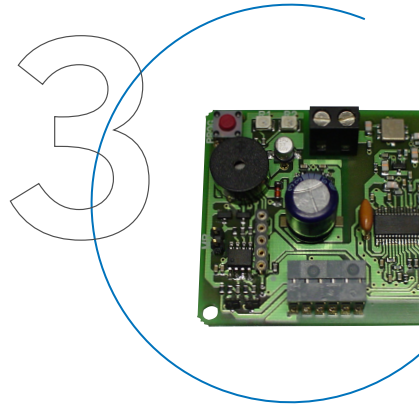
# MOTION access control line receivers



16



## models available receivers on pluggable cards



**STICK500**

868 MHz  
500 codes  
2 channels  
12 V  
with inlet for access control

## MOTION access control line receivers

### receiver operations

Different programming modes to choose the one that most suits.

- **standard manual programming**

This is used when starting an installation for the first time, using the programming button located inside the receiver. The codes are programmed by a self-learning process.

- **selectionable radio programming**

This programming option allows for the receiver to be remotely programmed and to register new transmitters using one that is already programmed on the installation.

- **programming with software**

All receiver functions can be programmed using the **SOFT-ASSISTANT** software and the **ASSISTANT** tabletop programmer.

- **programming by PIN**

To simplify management, a 4-digit PIN can be allocated to each installation. Simply record PIN on transmitters, keys or cards so that they can be registered by radio with the receiver or the control unit.

#### important note

All of these programming systems allow for serialized transmitters to be managed without altering the original code.

## MOTION access control line receivers

### other receiver characteristics

- **code replacement**

This function allows for transmitters to be automatically replaced, with no limit to the number of replacements. This is very simply done by pressing the new transmitter in front of the installation. This can be repeated as many times as required and a stolen or lost transmitter can be replaced as many times as necessary. The system also keeps the original code, laser-engraved onto the back of the transmitter.

- **total reset**

The codes on the receiver are totally reset by connecting the reset bridge for 5 seconds and pressing the programming button.

- **receiver antenna**

The receiver design includes a receiver antenna set at 868.35 MHz in its central position (smaller than the 433 MHz antenna). Should a larger range be required, the board has an inlet for connection to a coaxial antenna extension.

- **high level of watertightness**

The BASE and WAVE receivers are sold with the new rubber leading-in insulator system for different types of cables and conductors, guaranteeing IP54. In the event of requiring a higher level of watertightness, the boxes will be supplied with gland boxes and sealing to guarantee IP65.



## MOTION access control line receivers

- **sizes and features adapted to your needs**

The 500-code receivers are sold in mini or Standard boxes, according to whether the access control inlet is required or not. There is a cheaper, 1-channel Standard model and a 2-channel Standard model that can be extended to 4 channels.

- **design that gives a feeling of strength and user-friendly installation**

The BASE and WAVE receivers are sold in strong, elegant boxes with a front cover attached by screws to ensure a high level of equipment watertightness. They are attached to the wall using two or four screws (according to the model) that are supplied in the packaging.

- **network and channel activation indicators**

The receivers have 2 red LEDs to indicate output activation and correct operations during receiver power input. The two LEDs will subsequently flash every 5 seconds to confirm network connection.

- **programming and reset sound indicators**

A sound indicates receiver programming input and output and programming confirmation for each transmitter. This makes remote programming easier, informing the users of all the steps required in programming. There is also a sound sequence to confirm memory reset.

# autonomously managed **MOTION** access control units

## models available



**ACCESS-500** mini-access control unit  
incorporated radio  
connectable proximity readers  
1 channel that can be extended to 4  
500 codes  
230 V .ac.



**ACCESS-1000** access control unit  
incorporated radio  
connectable proximity readers  
2 channels that can be extended to 4  
1000 or 2000 codes  
front, on-board programming or with programming tool  
dual power supply 230 V .ac. / 12 V .dc.



## autonomously managed **MOTION** access control units

### ACCESS-500 control unit

- **on-board programming**

Possibility of on-site manual management of registrations and cancellations either individually or in groups of codes on installations of up to 500 users using the internal keypad. View of operations on 4-digit internal display. Automatic management of registrations/cancellations by extractable memory and ASSISTANT programmer.

- **standard equipment**

868 MHz receiver incorporated for use of radio transmitters and access control input for the connection of two proximity readers. Clock and calendar to save time and date of events when the optional, extractable memory of the last 1000 events is used. This is modular equipment supplied with 1 channel as standard and with the possibility of extending it to up to 4 channels by inserting impulse or bi-stable configurable relay cards. Any channel can be used as an anti-panic alarm.

- **protected access**

Access password to be able to begin the programming functions on the control unit. Front cover opening protected by vandal-proof screws.

- **small size**

The control unit is located in a very strong, small box.

- **options**

card holding the last 1000 events  
relay cards  
alarm card

# autonomously managed **MOTION** access control units

## ACCESS-1000/2000 control unit

- **very practical "on-board" programming**

This control unit has a front keypad with numeric and function keys for the different on-site operations (individual or group registrations and cancellations, etc.), which can be seen on a two-line LCD screen built into the front. Programming is also possible using the Assistant programmer and the corresponding extractable memory (1000 or 2000 codes).

- **standard equipment**

868 MHz receiver incorporated for use of radio transmitters and access control input for the connection of up to four proximity readers. Clock and calendar to save time and date of events when the optional, extractable memory of the last 2000 events is used. Extractable, 1000-code memory card (which can be replaced for a 2000-code memory card). This is modular equipment supplied with 2 channels as standard and with the possibility of extending it to up to 4 channels by inserting impulse or bi-stable configurable relay cards. Any channel can be used as an anti-panic alarm.

- **specific functions**

The control unit has kill-pass and discounting functions through the proximity readers. These can be enabled and disabled for every code either individually or by code range, using the keypad and LCD or the ASSISTANT programmer. It also has a validity date function for each element (transmitters, tags or proximity cards) with an associated validity date. This function is configured using the ASSISTANT programmer.

# autonomously managed **MOTION** access control units

- **protected access**

Access password to be able to begin the programming functions on the control unit.  
Front cover opening protected by vandal-proof screws.

- **very practical design box**

The front cover has 2 side hinges to prevent it from falling off when opened.

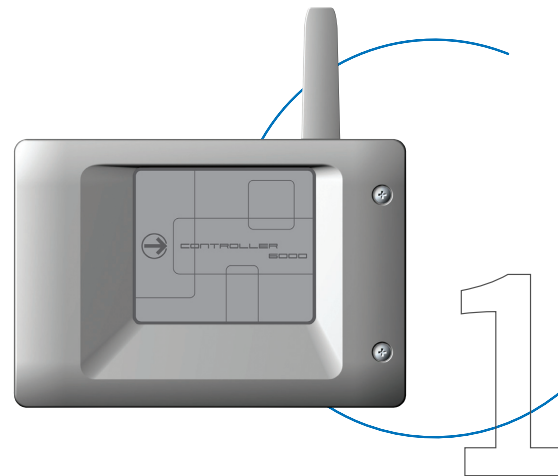
- **options**

2000-code memory card  
relay card  
alarm card  
anti-passback / anti-timeback card  
card holding the last 2000 events



# on/off line managed **MOTION** access control units + management software

## models available

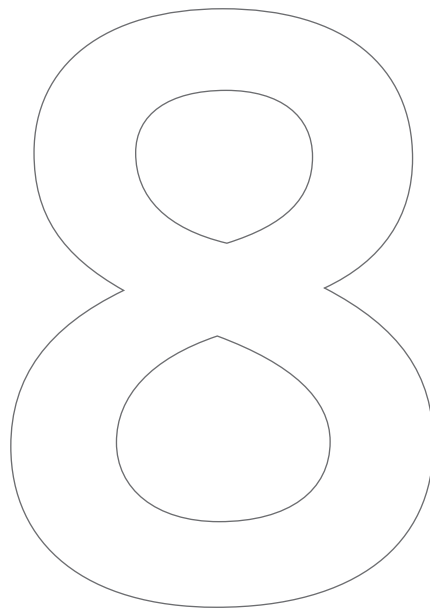


**CONTROLLER-6000** access control unit  
up to 6000 users  
RS-485 for the network connection of up to 32 units  
possible connection of radio and proximity equipment

**EASY-SOFT 6000** basic installation management software for CONTROLLER-6000 control units in Windows environment

**EXPERT-SOFT 6000** advanced installation management software for CONTROLLER-6000 control units in Windows environment

**KIT CONTROLLER-6000** contains: CONTROLLER-6000 control unit, EASY-SOFT-6000 management software, user licence, hardware protection key(dongle), web cam for user photos, (RS232/RS485) converter with power, power cable, PC connection cable, receiver interface CONNECT.



# on/off line managed **MOTION** access control units + management software

## CONTROLLER-6000 control unit

- The control unit can operate autonomously supporting up to 4 doors (or 2 input/output) or centrally. In this case, up to 32 units can be connected to the same network using an RS-485 bus line.
- In centralised mode, the control unit can be managed by PC, laptop or remotely by MODEM.
- It can be used on Ethernet networks by adding a TCP/IP (COMETE) interface.
- By connecting it to a HUB or a ROUTER, it can be controlled from anywhere in the world over the internet.
- There is a pluggable module for simple TCP/IP management from Internet Explorer.
- There is a special version of the control unit that allows for management of 2 doors with different programmable inlets and outlets.
- The control unit is compatible with the 868 MHz transmitter range (using the CONNECT radio interface) and 13.56 MHz proximity range.
- It has a memory containing the last 2000 off-line events.
- The control unit itself has a hinged cover and side opening for further convenience and to prevent the cover from falling off when handled.
- It has pluggable terminals for easier connections.

# on/off line managed **MOTION** access control units + management software

## EASY-SOFT 6000 management software



- The very simple configuration of this software allows for use even by non-experts in access control.
- Memory capacity of up to 6000 transmitters, keys or codes in boxes on the same network.
- Memory capacity of up to 32000 events.
- Management of 4 doors per box or 2 doors (with 1 input reader + 1 output reader).
- 8 programmable time slots, real calendar with holidays.
- Card time validation.
- Sequence programming for a series of codes.
- Anti-passback and anti-timeback function.
- Security function for doors left open or locked.
- Possibility of editing a list of users present at any time.
- Personalised event search function.
- Possibility of recording the photo of users on their files (by webcam) and of recording voice messages to indicate the actions and/or names of users.

## EXPERT-SOFT 6000 management software

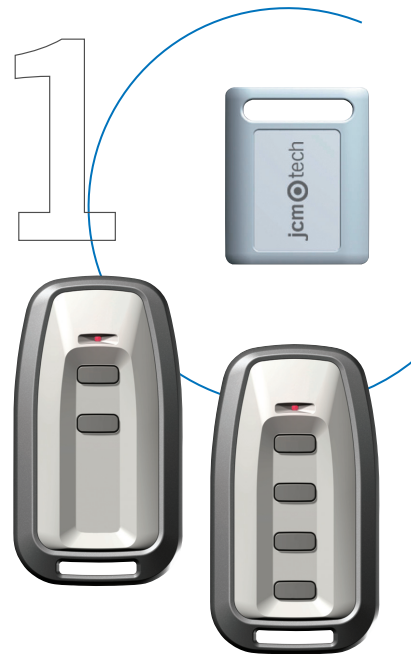
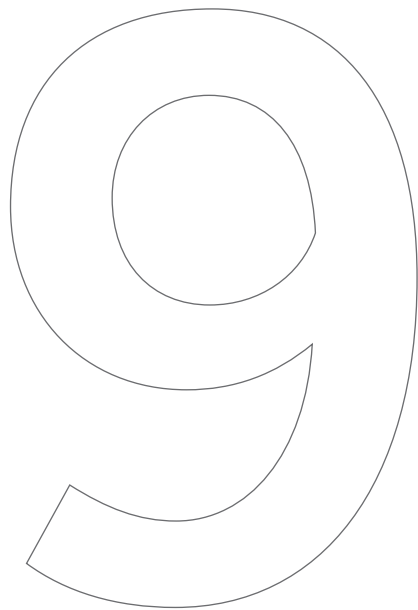


As well as the basic functions of EASY-SOFT 6000, this software version offers the following features:

- Graphic system supervision: a dynamic diagram of the installation can be configured indicating the status of doors and readers.
- Management of 32 weekly access slots and 8 weekly slots that can be used by automatons.
- Possibility of connection to an alarm station or light timer in the event of the door being left open.
- Personalised user profile management.
- "Pass-card" and "alarm-card" management.
- By adding the TCP/IP (COMETEFX) interface module, the box can be managed through Internet Explorer without the need for management software.

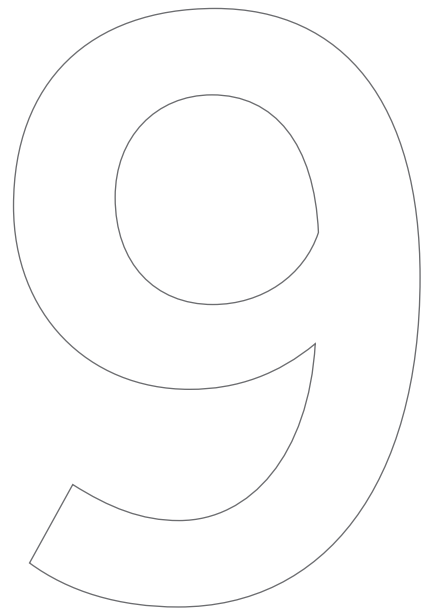
# proximity equipment **MOTION** access control line

## models available activation elements



- GO-EVO2** programmable transmitter-key with dual technology (868 MHz radio + 13.56 MHz proximity)  
2 channels  
high-security rolling code  
APS system
- GO-EVO4** programmable transmitter-key with dual technology (868 MHz radio + 13.56 MHz proximity)  
4 channels  
high-security rolling code  
APS system
- ECO-TAG** 13.56 MHz proximity key  
programmable once on a 200-unit box  
simple operations
- MOTION-TAG** read-write 13.56 MHz  
proximity key  
reprogrammable using the management tool  
advanced functions (killpass, validity dates, etc.)
- EVO-TAG** read-write 13.56 MHz  
proximity key  
reprogrammable using the management tool  
advanced functions+ pre-payment function

# proximity equipment **MOTION** access control line



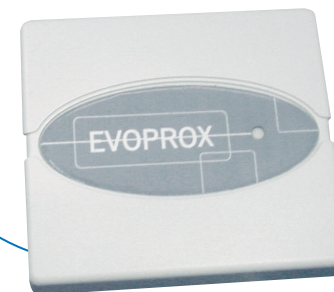
## **MOTION-CARD**

ISO-type 13.56 MHz  
read-write  
proximity card  
reprogrammable using management tool  
advanced functions (validity dates, etc.)

## **EVO-CARD**

ISO-type 13.56 MHz  
read-write  
proximity card  
reprogrammable using management tool  
advanced functions + pre-payment function

## proximity readers



## **EVOPROX**

13.56 MHz proximity reader  
with BUS LIN, Wiegand and Clock&Data output  
very small  
IP66 watertightness

## proximity equipment **MOTION** access control line

### strong points of the motion proximity system

- **new frequency**

All proximity equipment operates on the new 13.56 MHz frequency for faster reading and more features.

- **new features**

- **validity date function.** This establishes an initial and end validity date for each transmitter/tag or card allowing for this configuration. In the event of having an expiry date, the tag/card/transmitter will stop working in the installation when it is not within the parameters established in the receiver/decoding equipment. It can, however, be subsequently reprogrammed. The validity date is placed over the pre-payment function. This means that it will not work either if the discount is at a particular value but outside the dates or if the discount is at 0 within the dates established.

- **destruction function (kill-pass).** This function disables a tag/card/transmitter on the lost or stolen list "to be eliminated" when next used in the receiver/decoder.

- **pre-payment function (or access discount).** With the help of the ASSISTANT programming tool, each transmitter/tag/card can be allocated a number of points to allow for access while said points are available.

- **multi-protocol**

The proximity readers have a BUS LIN (JCM made), Wiegand and Clock&Data output.

## proximity equipment **MOTION** access control line

### activation elements

#### GO-EVO2, GO-EVO4 dual technology transmitters

- Transmitter combining long-distance radio activation and short-distance proximity activation.
- There is a two-channel model (with two buttons) and a four-channel model (with 4 buttons).
- Radio and proximity codes are recorded simultaneous in a single, contactless operation.
- Fitter code: the installations can be personalised by the incorporation of an exclusive code (up to 128 codes). If the fitter requests as such from his distributor, a personal code can be allocated that can be added to the transmitter and other equipment using the SOFT-TRAINER. Recording is contactless.
- Series number laser-engraved to the back of the transmitter.
- Metallic paint finishes to reinforce the product's quality image.
- Very original, key ring design.
- Personalised transmitter with distributor's logo (on the front).
- Fitter information: the fitter has a space at the rear of the transmitter for a personalised label including the most relevant details of his company.

# proximity equipment **MOTION** access control line

## activation elements

### ECO-TAG, MOTION-TAG, EVO-TAG proximity keys

- There are 3 models of keys with different functions and finishes to adapt to any market requirements (**see table on next page**).
- The design is the same for the 3 models: a very small key ring with very pleasant finishes and colours that can be kept in the pocket without disturbing.
- Conforming with ISO15693 regulations.
- Programmable by proximity with the help of the ASSISTANT programming tool.
- Reading distance approx. 3 cm.
- Size: 32 x 26 x 5 mm.

### MOTION CARD, EVO-CARD proximity cards

- ISO-type cards.
- Reading distance approx. 5 cm.
- Same models and functions as proximity keys.



# MOTION access control line proximity equipment



## activation elements

	<b>ECO-TAG</b>	<b>MOTION-TAG, MOTION-CARD</b>	<b>EVO-TAG, EVO-CARD</b>
Functions	<ul style="list-style-type: none"> <li>■ Programmable once by the distributor (to record the fitter code).</li> </ul>	<ul style="list-style-type: none"> <li>■ Reprogrammable as many times as required with ASSISTANT tool.</li> <li>■ Killpass function.</li> <li>■ Validity date function.</li> <li>■ Replacement.</li> <li>■ Fitter code.</li> <li>■ Alarm function.</li> </ul>	<ul style="list-style-type: none"> <li>■ Reprogrammable as many times as required with ASSISTANT tool.</li> <li>■ Killpass function.</li> <li>■ Validity date function.</li> <li>■ Replacement.</li> <li>■ Fitter code.</li> <li>■ Alarm function.</li> <li>■ Pre-payment function.</li> </ul>
Finishes	<ul style="list-style-type: none"> <li>■ Individual identification with laser-engraved series number.</li> <li>■ Pack of 200.</li> </ul>	<ul style="list-style-type: none"> <li>■ Individual identification with laser-engraved series number.</li> <li>■ Key ring design (tag).</li> <li>■ Individual packaging (tag), pack of 100 (card).</li> <li>■ Possibility of distributor's logo.</li> </ul>	<ul style="list-style-type: none"> <li>■ Individual identification with laser-engraved series number.</li> <li>■ Key ring design (tag).</li> <li>■ Individual packaging (tag), pack of 100 (card).</li> <li>■ Possibility of distributor's logo.</li> </ul>

# proximity equipment **MOTION** access control line

## proximity readers

### **EVOPROX mini proximity reader**

- Standard 15693. Also reads 13.56 MHz Standard ISO 14443 A (Mifare, etc) and ISO 14443B card or tag series numbers.
- Provides read/write features for card information recording.
- Fitted with Bus LIN (JCM), Wiegand, Clock&Data output (selected by the fitter).
- Supplied pre-wired.
- Very small box 84 x 75 x 14 mm. with IP66 watertightness level.
- Two-colour LED for operating and feed-back indications.
- Self-adjustable on metal surfaces.

# MOTION access control line programming tools

# 10

34

## models available for distributors (exclusive)



**SOFT-TRAINER** Basic software for programming the exclusive fitter code on GO-PRO and GO-EVO transmitters. Software designed in Windows environment (Windows versions 98, Me, 2000 and XP)

## models available for distributors and fitters



**ASSISTANT** Tool for contactless programming of transmitters, dual technology transmitters, proximity keys and proximity cards. Also allows for receiver and control unit memory card programming.

**SOFT-ASSISTANT** Software that can be updated over the internet and with convenient radio or memory card programming for all products in the MOTION range. User-friendly management of the different installation parameters.

# MOTION access control line programming tools

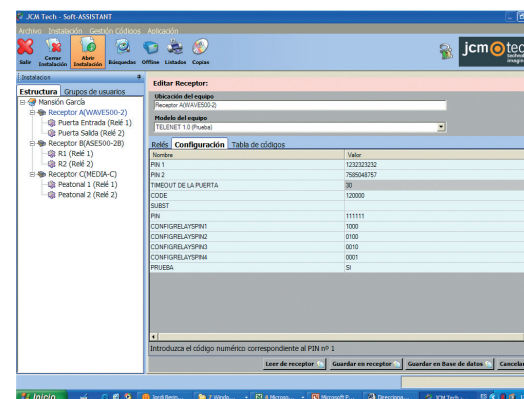
## strong points

- **Internet programme updates**

By entering a restricted area on the JCM website, authorised customers can directly download the ASSISTANT update programme (hardware + software).

- **Enquiry and programming functions can be made in the following manner:**

- Enquiries and programming directly from the PC using the ASSISTANT tabletop programmer.
- If the company has intranet and the installations are saved on the server, the installation can be managed on site using a laptop and subsequent data synchronisation in the company.



# MOTION access control line programming tools

## ASSISTANT programming equipment

- Small, tabletop equipment.
- CONTACTLESS programming of transmitters, keys and cards from the MOTION range by merely holding the equipment near the graphically indicated programming area.
- Memory cards can be programmed for all receiver and control unit equipment in the MOTION range by inserting the mechanical connector card provided for this purpose.

## SOFT-ASSISTANT equipment and installation programming software

- **configurable management level**
  - The SOFT-ASSISTANT programme allows for work at different levels of complexity.
  - In its original version, the programme is configured with the basic functions. Each user may then select the options to be used, thus configuring a personalised, higher level version.
- **compatible** with windows 2000 and windows SP.
- **multi-language**. Users can quickly configure the operating language required.
- The application logo and logo on the right of the window can be **personalised** for each distributor.
- **installation management**
  - Event reading
  - Add/Cancel personalised codes on memory card.
  - Creation of new installations.
  - Installation maintenance (reservations, modifications, etc.).
  - List of installation (details of a receiver, detailed installation, summarised installations, etc.).

# MOTION access control line programming tools

- **equipment management using the ASSISTANT tabletop programmer**
  - Recording and reading of transmitter, tag and proximity card codes and receiver and control unit memories either individually or in groups.
  - Password recording and reading.



**JCM TECHNOLOGIES, S.A.**  
MORGADES, 46 BAJOS  
08500 VIC (BARCELONA)  
SPAIN  
TEL. + 34 93 883 32 31  
FAX + 34 93 883 32 33  
E-MAIL: [info@jcm-tech.com](mailto:info@jcm-tech.com)  
WEB SITE: [www.jcm-tech.com](http://www.jcm-tech.com)

**JCM TECHNOLOGIES, S.A.R.L.**  
16, PARC D'ACTIVITÉS DU CAP VERT  
21800 DIJON-QUETIGNY  
FRANCE  
TÉL. 03-80-48-23-40  
FAX 03-80-48-23-41  
E-MAIL: [ventes@jcm-tech.com](mailto:ventes@jcm-tech.com)  
WEB SITE: [www.jcm-tech.com](http://www.jcm-tech.com)