

electronic solutions for doors, gates and automatic  
entry control elements

# GOBio

868 MHz transmitters with  
biometric activation



controls with  
fingerprints

**jcm**technologies

be a step ahead with technology and imagination





### GOBio

Programmable Motion Transmitter, 868 MHz.  
4 activation channels, changing code and APS (Approaching System).  
Up to 15 fingerprints in the memory.  
Power supply: 1.5Vdc (1 lithium AAA battery).  
Battery life: 1.5 years (approx.).  
Ideal for vehicle and pedestrian use.  
Dimensions: 76 x 41 x 15 mm.



### GOBio/s

Installation on door or wall (built-in or surface).  
4 activation channels, changing code.  
Up to 15 fingerprints in the memory.  
Power supply with 2 lithium AAA battery.  
Battery life: 2.5 years (approx.).  
Special colours upon request.  
Dimensions: 93 x 93 x 30 mm.



A biometric remote control by JCM that provides the highest security, reliability and convenience for the user.

It stores 15 fingerprints that can be configured to open the programmed doors by just putting the finger on the scanner.

The biometric technology ensures maximum security.

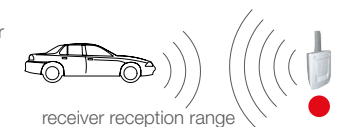
Easy to programme, install and use.

It can work with the ASSISTANT programming tool.

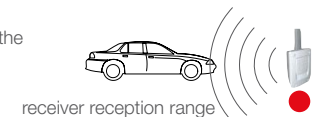
High reliability and large range for the user.

With the APS (Approaching System), the transmitter can be activated by scanning the fingerprint even outside the reception range of the receiver. The transmitter will transmit the signal repeatedly while the user approaches the garage door, and until the door opens.

1 The user activates the transmitter outside the reception range.



2 Within 15 seconds the user enters the reception range. The door remains closed.

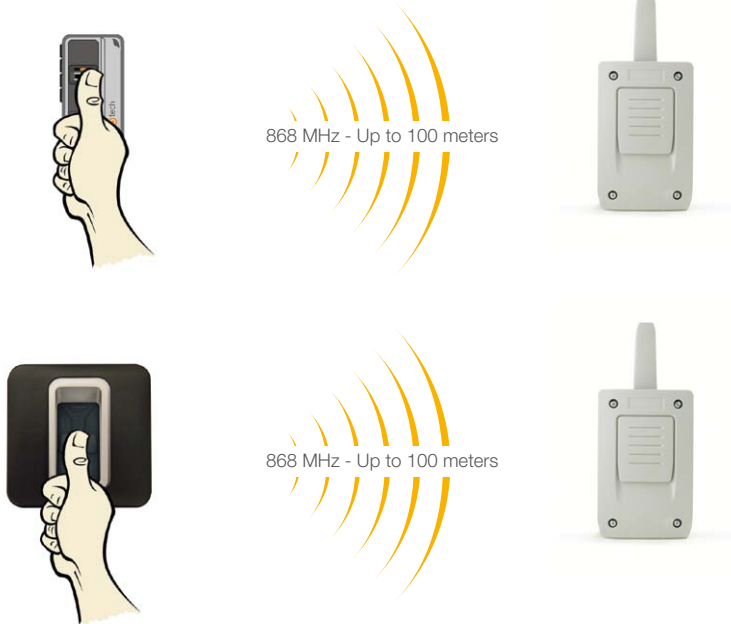


3 The receiver receives the signal automatically without activating the transmitter again and the door opens.



Just put the finger on the scanner and the transmitter will send the code within a maximum distance of 100 metres, and the doors will open or close.

The channel can be selected on the **GOBio** and then it can be validated by putting the finger on the scanner, or each channel can be assigned to a fingerprint and it recognises the channel just by putting the finger on the scanner.



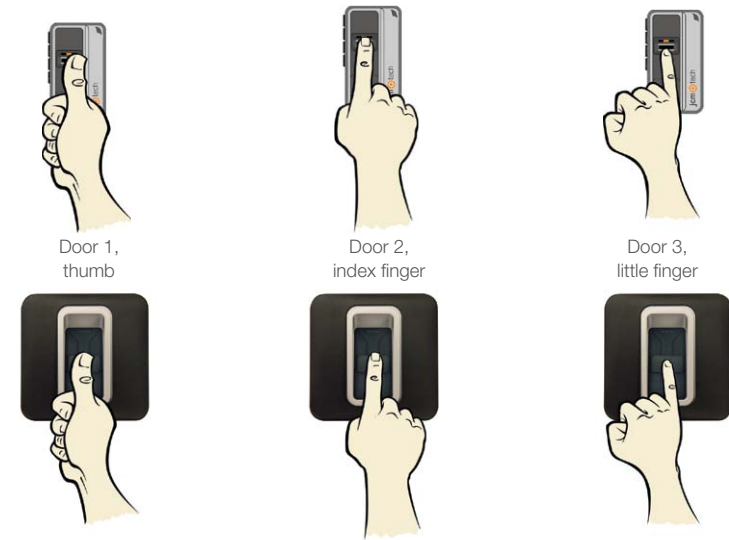
## 2 user levels

Master: the user can configure (enter and delete fingerprints) and use the transmitter

Basic: the user can use the transmitter but not configure it.

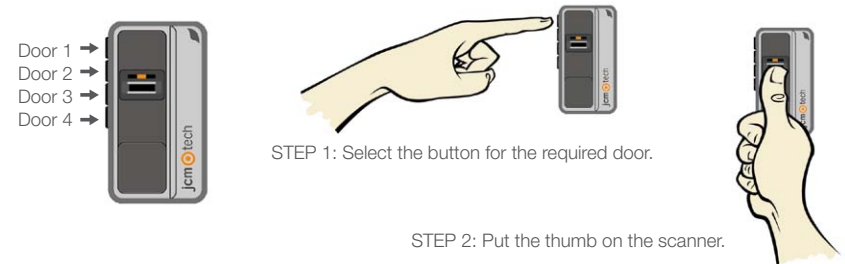
## Type A Activation

It works by putting the predefined finger for each door. Each fingerprint will enable the user to open a different door.



## Type B Activation (exclusive to GOBio)

It enables users to preselect the door with a button, and then with the configured fingerprint. The same fingerprint can activate more than one door.



### Power supply

GOBio requires 1.5Vdc (1 lithium AAA battery), lasting 1.5 years. GOBio<sup>®</sup>, GOBio<sup>®s</sup> require 2 lithium AAA batteries, which can last up to 2.5 years approximately.

### Leaktightness rating

GOBio<sup>®</sup> and GOBio<sup>®s</sup> with a plastic box prepared for outdoors IP65.

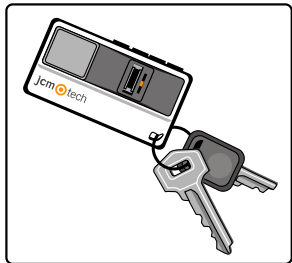
### Working temperature

Guaranteed working temperature from -20°C to 55°C.

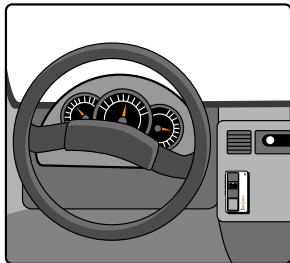
### Installation

GOBio: Installation in the car or keyring

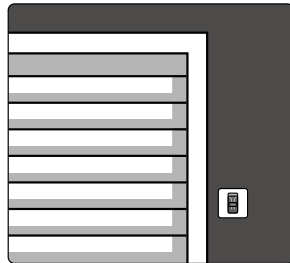
GOBio<sup>®</sup> and GOBio<sup>®s</sup>: installation in a door or wall.



GOBio on a keyring.



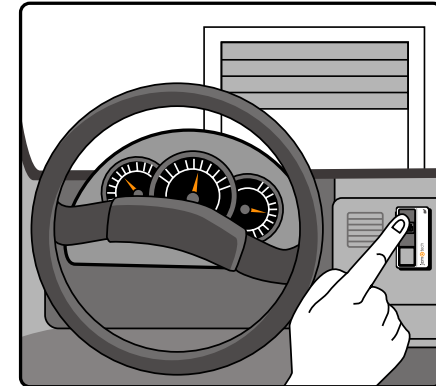
GOBio installed in the car dashboard.



GOBio<sup>®</sup> (built-in) or GOBio<sup>®s</sup> (surface) installed in the wall.

### Activation

It works by putting the predefined finger for each door. Each fingerprint will enable the user to open a different door, with the security of biometric technology.



Activation of the GOBio installed in the car dashboard.



Activation of the GOBio<sup>®</sup> (built-in) or GOBio<sup>®s</sup> (surface) installed in the wall.

# GOBio

radio transmitters with biometric technology

## certifications



ISO 9001



EUROPEAN UNION  
CERTIFICATION



FEDERAL COMMUNICATION  
COMMISSION

