



SALES PITCH

## TOOLS FOR MANAGING YOUR INSTALLED EQUIPMENT REMOTELY





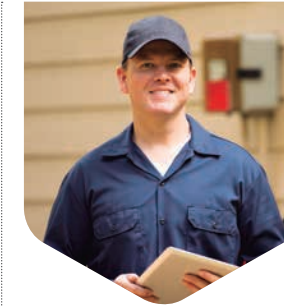


# Index



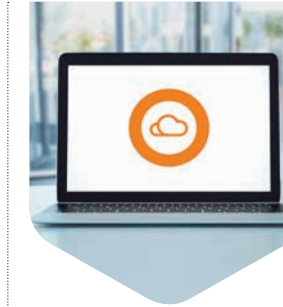
5

APPLICATION



7

BENEFITS FOR THE  
INSTALLER



9

BENEFITS FOR THE  
USERS



11

TECHNICAL  
SPECIFICATIONS



12

EQUIPMENT TO BE  
MANAGED







## APPLICATION

Designed for installers/maintainers who wish to manage their installed equipment remotely, CLOUD ASSISTANT lets you do so from anywhere at any time. This means it has a tool that needs no software to be installed and is permanently updated.

Communities of residents and residential areas with large numbers of users require numerous changes of transmitters due to losses, tenants leaving/arriving, etc. With CLOUD ASSISTANT, the installer avoids the need to travel to register another transmitter, as you can do it from your office or anywhere you have a computer and an ASSISTANT available.

CLOUD ASSISTANT management software lets you create an installation with all the equipment assembled and the transmitters, cards and tags delivered. The reserve codes stored by the receiver enable registration of the new transmitters, ensuring that only you can perform that operation. It also allows you to carry out exhaustive monitoring of all installation events.

You only need the ASSISTANT programming tool and access to the CLOUD ASSISTANT web site, which requires no installation, maintenance or updating. Forget those tiresome configuration or software incompatibility problems.

CLOUD ASSISTANT is compatible with the range of MOTION JCM products. So you can enjoy all the benefits of the CLOUD ASSISTANT management tool with the broad, tried and trusted range of MOTION products. And all with the JCM reliability guarantee.





## Benefits for the Installer/ Maintainer



### Discover all the advantages:



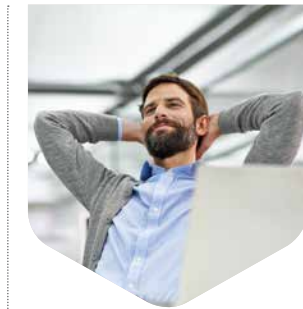
Protect your business against intrusions by other installers by personalizing equipment with an exclusive client code.

Protect your installation from unauthorized transmitters by filling and blocking memory with reservations.



Prevent the entry of unauthorised personnel with management by groups and time slots.

Response to incidents. See the device, date and time it was used to gain access to the facility.



Avoid unnecessary journeys to register a transmitter in a community of residents.

Quick, intuitive management from anywhere (office, car, home, etc.).



With no software, maintenance or update.

### As well as:

- 5-Year warranty.
- Certification to European standards.
- Technical support from JCM.





## Benefits for Installation Users



### Discover all the advantages:



In case of loss or theft, the user reports, the old transmitter is blocked and receives its new transmitter.

The user does not have to wait for the installer to deliver the transmitter. The transmitter is sent by messenger to where the user indicates (office, address ...) and when it is placed in front of the door, the transmitter already works.



Improved security in the premises by preventing entry of unauthorised personnel, by granting permissions to enter and exit by group and time slots.

### As well as:

- 5-Year warranty.
- Reliability of a JCM product.





## TECHNICAL SPECIFICATIONS



### CLOUD ASSISTANT

Web-based software for programming equipment and managing installations.

- Compatible with Chrome browser.
- Multi-language.
- Equipment management by means of the ASSISTANT desktop programmer.

### BASIC FUNCTIONS

- Simple, intuitive web environment.
- Programming of Motion receivers and transmitters.
- Enables new Motion transmitters to be added and existing ones to be replaced without travelling.
- Management by user groups.
- Management of events.
- Scheduled access at relay level.
- Universal groups with access to multiple facilities.
- Personalisation of the website and the Motion devices.
- Multi-user access.
- Multi-language.

### ASSISTANT

Tool for programming transmitters, keys and proximity cards, receivers and panel memory cards.

- Needs CLOUD ASSISTANT to operate.
- Slimline desktop equipment.
- Visual function and operation indicators.
- Contactless graphical indication of programming area for transmitters, keys and cards.
- Single connector for insertion and management of receiver and panel memory cards.
- Can be personalised with installer code.
- USB computer communications.
- Compatible with Windows10, Windows8, Windows7.
- Dimensions: 110 x 85 x 25 mm.

**EQUIPMENT TO BE MANAGED**



**TRANSMITTERS**

GO, GOMINI AND MUV TRANSMITTERS IN THEIR PRO AND EVO VERSIONS  
WALL, BIOMETRIC, FREE AND UNIVERSAL TRANSMITTERS



**RECEIVERS**

BASE · STICK · WAVE



**PROXIMITY TAGS AND CARDS**

MOTIONTAG · EVOTAG · MOTIONCARD · EVOCARD

**EQUIPMENT TO BE MANAGED**



**ACCESS CONTROL PANELS**

DLX, ACCESS Y VIGIK

**EQUIPMENT TO BE MANAGED**

**CONTROL PANELS  
VERSUS**

**5**  
Year  
warranty  
for **JCM** products

Refer to warranty and after-sale conditions.

**Use of the system**

The manufacturer reserves the right to change equipment specifications without prior notice.

**EU declaration of conformity**

JCM TECHNOLOGIES, S.A. declares that the ASSISTANT product meets the essential requirements of the Radio Equipment Directive 2014/53/EU and of the RoHS Directive 2011/65/EU

See the website [www.jcm-tech.com/es/declaraciones](http://www.jcm-tech.com/es/declaraciones)



**jcm**tech  
technology & imagination



# CLOUD TECHNOLOGY



With Cloud Assistant there is no need to install any programs. Now JCM lets you manage your installations at any time from anywhere: your office, your home... saving on costs and gaining efficiency in your management.

## CLOUD ASSISTANT, YOUR TECHNOLOGICAL ASSISTANT IN THE CLOUD!

we   
tech



Cloud Assistant



RadioSens



RadioB and



GoBio



KEE



RBand SPC



Captive

