

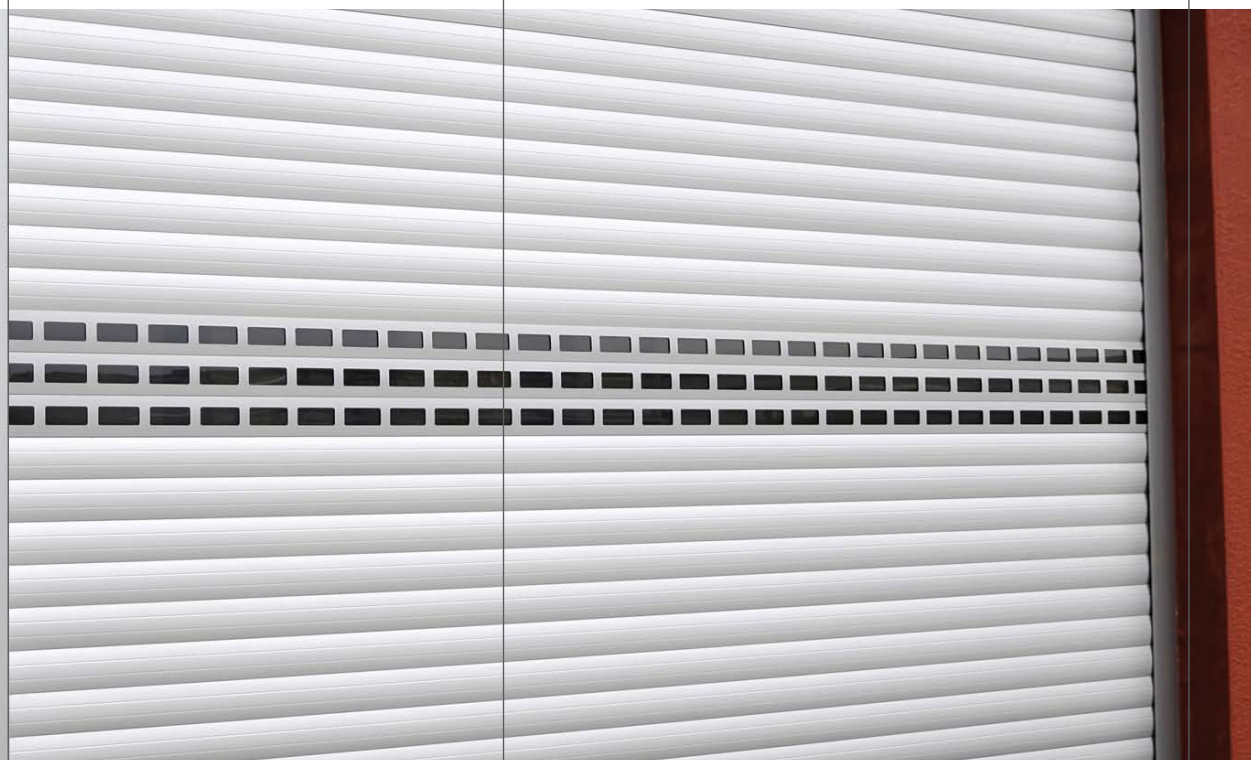


# ROLLER868 STARTEU

Applicable to doors  
roller

single-phase control panel

control panel platform  
single-phase control panels



## In line with European standards

A new generation of control panels designed and prepared to meet the requirements of standard EN 13241-1: 2003 for industrial, commercial, garage doors and gates, with special emphasis on Safety in Use of Power Operated Doors as per European Standard EN 12453.

## Design

Pleasantly-shaped, waterproof and practical boxes. With space for wiring and motor capacitor.

## Versatile panels

An extensive, powerful range of panels for applications in shops, residential garages, large and small communities and industry, etc.

## Optimum reliability

The careful selection of components and thorough tests carried out under real conditions of use ensure optimum installation reliability.

## Time-saving and greater precision

Digital programming provides faster and more precise adaptation and programming of the panel to suit any type of door. No more than five minutes are required for the entire programming.

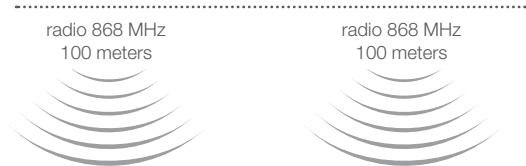
jcmtechnologies  
be a step ahead with technology and imagination

Single-phase operating panel  
for roller doors.



ROLLER868 · STARTEU

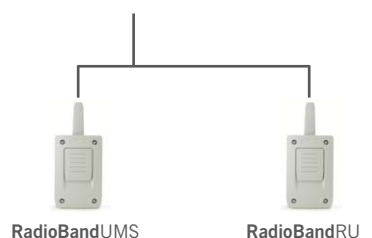
TRANSMITTERS 868 MHz



RECEIVERS 868 MHz



proximity  
13,56 MHz  
3 a 6 cm



CONTROL PANELS



ROLLER868

- Operating panel for roller doors for residential and commercial use.
- Dead-man or mixed semi-automatic operations (automatic opening, dead-man closure) or automatic operations using an option switch.
- No limit switch inlet.
- Automatic operating and closure time adjustment.
- Selectable automatic closure by use of the option switch.
- A jumper can be used to work with 1, 2 or no resistive safety edge.
- Photocell connections are possible on series closure with safety edge.
- 868 MHz receiver with 15 codes built in.
- Active input switch. Safety inputs not used do not have to be bridged.
- Max. motor power 230V/0.75CV (0.55KW) single-phase.
- Built in 15 codes Receiver, Motion 868 MHz.
- Digital operating time programming.
- Start button and security edge (1 or 2 by jumper) / photocell (only 1 on closure) input.
- Power ON light indicator.
- 12Vac output.
- Removable connectors.
- IP54 (IP65 with packing gland).
- Box measurements: 140 x 220 x 55 mm.



STARTEU

- Operating panel for axis centre motors and automatism for roller doors and shutters.
- Opening/closure dead-man or semi-automatic operations (with no automatic closure by switchable bridge).
- Safety inputs not used must be bridged.
- Max. motor power 230V/0.75CV (0.55KW) single-phase.
- 433 or 868 MHz radio card connector.
- Digital operating time programming.
- Start button and safety edge input. (1 or 2 by bridge/fotocells (only 1 for closing)).
- Power ON light indicator.
- Limit switch connection, independent open/close.
- Non-removable connectors.
- IP53.
- Box dimensions: 172x122x60 mm.

ACCESSORIES

ROLLER868: GOKey-S / -E · GOSwitch-S / -E · GOButton

STARTEU: STICK30 · STICK500 · RACK1 · RACK2